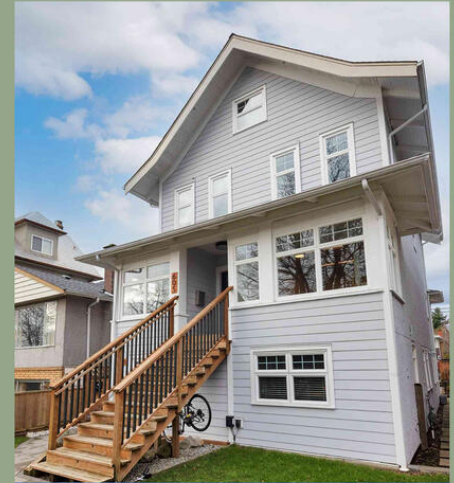


# You Can Help Someone Reclaim Their Life

Do you believe in the power of transformation—of lives rebuilt with dignity, stability, and hope?

At Place of Refuge, second stage recovery begins with safety, connection, and belonging. Addiction is devastating and isolating, whether it affects a loved one or yourself.

That's why Place of Refuge exists. We walk alongside and support men healing from substance use, offering long-term abstinence-based transitional housing, and the tools required to rebuild purposeful, independent lives. What began as a vision of safe homes and renewed hope have grown into a proven and successful model of transitional housing.



# The Need in British Columbia

Long wait lists for treatment, limited services, and some of the highest housing costs in Canada make supportive housing especially challenging for our marginalized population to access.

We provide two affordable, and supportive homes where men can leave addiction behind and put their hopes and dreams into action.

*“This house is exactly what I needed. The support is there when I need it, and I’ve found stability and peace I hadn’t before.”*

— Leaf, Resident

*“Early recovery is uncertain, but Place of Refuge has been calm, supportive, and drama-free. That has made all the difference.”*

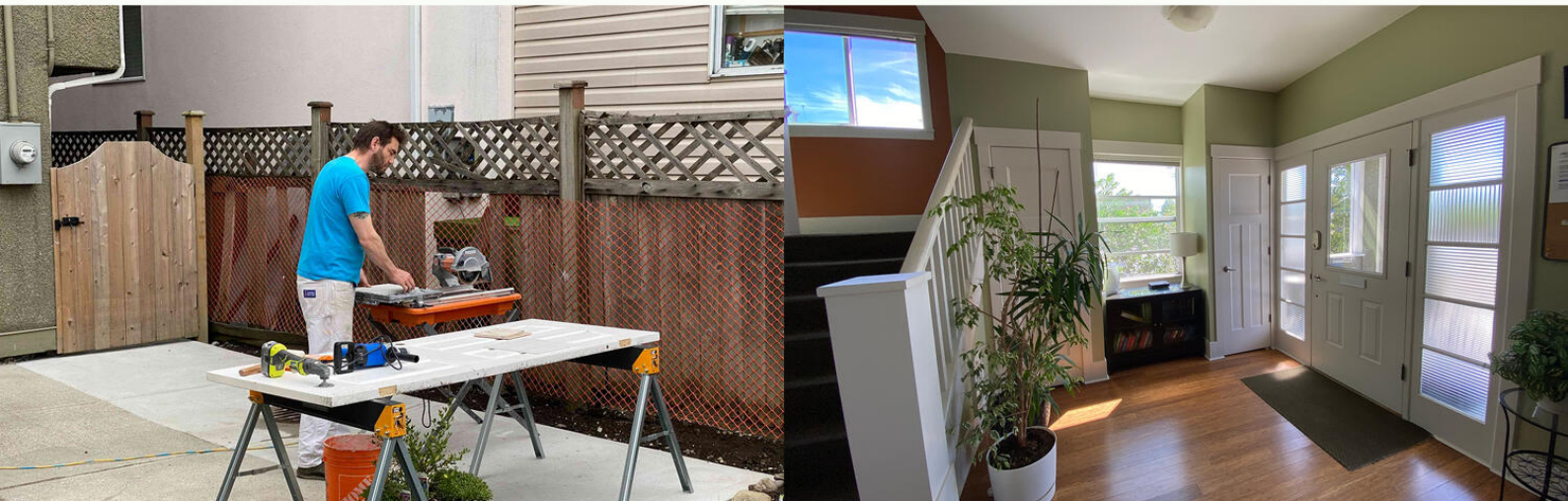
— Nathaniel, Resident



# What Makes Place of Refuge Different

Unlike short-term programs, Place of Refuge is a faith-based society offering a long-term transitional housing (up to three years) for men in recovery. Our residents don't just stay here—they belong here. They rediscover stability, responsibility, and hope in a supportive home environment that fosters lasting wellness.

Transitional recovery housing provides the time and support men need to focus on their wellness, develop life skills, and build a future free from substance use.



# A Trusted Community Partner

Peace Church on 52nd, Point Grey Inter-Mennonite Fellowship,  
Sherbrooke Mennonite Church, Mennonite Central Committee BC.

Province of BC Assisted Living Registry (registered transitional housing) | BC Health-registered

Member, BC Addiction Recovery Association | Canadian Addiction Certification Federation

Vancouver Coastal Health Authority partnerships | Community partner with Vancity

# Our Impact

300+ men supported since 2009

75% stay at least 1 year

60% stay 2 years

55% maintain successful recovery after 3 years

Strong partnerships with YMCA, Vancity, WorkBC, adult education programs, healthcare providers, and local churches

Peer mentor support led by program graduates

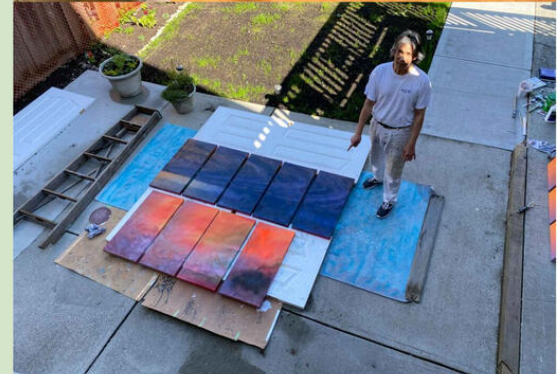
# Our Approach to Wellness

*We believe recovery is not just about ending addiction—it's about rebuilding a life.*

## Our Values in Practice

- ◆ Privileged listening over advice giving.
- ◆ Strengths-based, person-centred approach.
- ◆ Spiritual support from our community Church members.
- ◆ Non-clinical, home environment.
- ◆ Respect for individual choice and dignity.
- ◆ Inclusive, non-discriminatory practice.

Our program practices a **relational learning community model**, where residents, and staff co-create opportunities that yield successful outcomes and long term wellness.





# Programs & Supports

- ◆ Long-term transitional recovery housing (20 beds).
- ◆ Person centred therapeutic support.
- ◆ Weekly psycho-social programming.
- ◆ Weekly Spiritual Groups.
- ◆ Life skills coaching and financial literacy.
- ◆ Our counsellors co-create a personal wellness action plan with each resident.
- ◆ Employment, education and advocacy support through WorkBC and community services providers.
- ◆ Certified counsellors and highly trained staff.
- ◆ Spiritual and community support.
- ◆ Peer mentorship from program graduates.

# Our Ask: Help Sustain Homes for Healing

Although our homes receive government subsidies, these do not cover our full operating costs. We currently carry nearly **\$15,500** per month in mortgage payments for two homes, limiting our ability to grow and sustain our impact.

## Your support can help us:

- ◆ Keep resident fees affordable
- ◆ Ensure long-term stability
- ◆ Expand life-skills and recovery programming
- ◆ Strengthen and grow our community impact

Schedule a conversation with our Executive Director and one of our Board Members to learn more about our program and experience the success of healing in action

Jeff Borden, MA, ICADC, ICCS – Executive Director –  
[jeff@placeofrefuge.ca](mailto:jeff@placeofrefuge.ca)

Garry Janzen – Board Chair – [garry@placeofrefuge.ca](mailto:garry@placeofrefuge.ca)

Office: 604-225-8553 [placeofrefuge.ca](http://placeofrefuge.ca)